



**LUXURY  
MEETS  
CONNECTIVITY**



**RUDRA  
PARADISE**  
LUXURY MEETS CONNECTIVITY



# THE LIFESTYLE THAT CONNECTS ALL

**G + 16 Floors**  
**Residential & Commercial Spaces**  
**2 & 3 BHK Flats**

Rudra Paradise is a boutique project & the tallest 16 storied tower of Santacruz east with well-planned residential and commercial spaces, located in the heart of Western Mumbai Suburbs. It is an ultimate dream home designed with passion and built on the foundation of trust by the developers rooting from Ahmedabad, now shaping Mumbai.

Rudra Paradise is located in close proximity to Mumbai Domestic & International airports. The western express Highway is only few mins walk from the project and also a short drive from the Central Business District of BKC while offering a value proposition for the discerning few who value the work-life balance the most in a very busy & fast-paced metropolitan.

Rudra Paradise is your gateway to a comfortable living surrounded by the buzzing social life hubs & also the spiritual places of workship for the devotional ones.

# AMENITIES THAT MAKE YOUR OWN WORLD



YOGA AREA

## AMENITIES

### COMMON AMENITIES

- Well designed Entrance Lobby with nameplates, letter boxes etc.
- Security Cabin
- Paver tile pavement in entire compound except garden area
- Society Office
- Servants Toilet
- Anti-termite treatment
- Designer Compound wall
- Designer Entrance Gate
- Rain Water Harvesting System
- Borewell in the premises

### ADDITIONAL AMENITIES

- Yoga area
- Meditation area
- Childrens play area
- Rooftop Garden
- Modern Gymnasium
- BBQ Area



MEDITATION AREA



CHILDRENS PLAY AREA



MODERN GYMNASIUM



# A LIFESTYLE ABODE

Rudra Paradise is a lifestyle paradise in every sense of convenient living with premium quality finishes.

The apartments are spacious with unobstructed open views of western express Highway and both Mumbai domestic and international airports.



# FLOOR PLANS



GROUND FLOOR				
SHOP NO.	1	2	3	4
RERA CA	313.02 SQ.FT.	493.85 SQ.FT.	298.70 SQ.FT.	927.10 SQ.FT.





# FLOOR PLANS



1st FLOOR				
OFFICE NO.	1	2	3	4
RERA CA	433 SQ.FT.	1134 SQ.FT.	1061 SQ.FT.	753 SQ.FT.



# FLOOR PLANS



2nd FLOOR				
FLAT NO.	1	2	3	4
TYPE	2 BHK	3 BHK	3 BHK	2 BHK
RERA CA	633.46 SQ.FT.	901.27 SQ.FT.	901.16 SQ.FT.	758.65 SQ.FT.



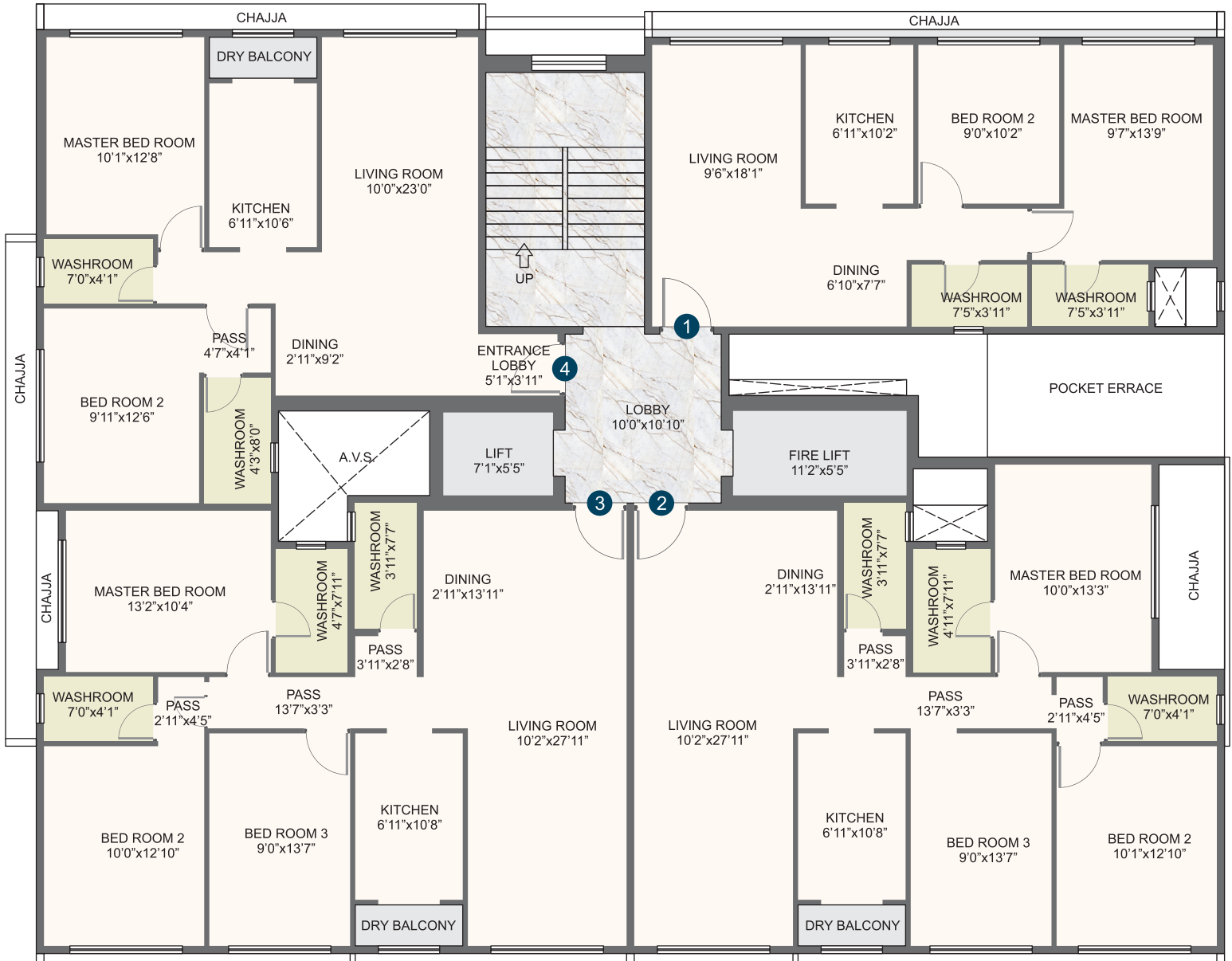
# FLOOR PLANS



3rd to 6th FLOOR				
FLAT NO.	1	2	3	4
TYPE	2 BHK	3 BHK	3 BHK	2 BHK
RERA CA	633.46 SQ.FT.	901.27 SQ.FT.	901.16 SQ.FT.	758.65 SQ.FT.



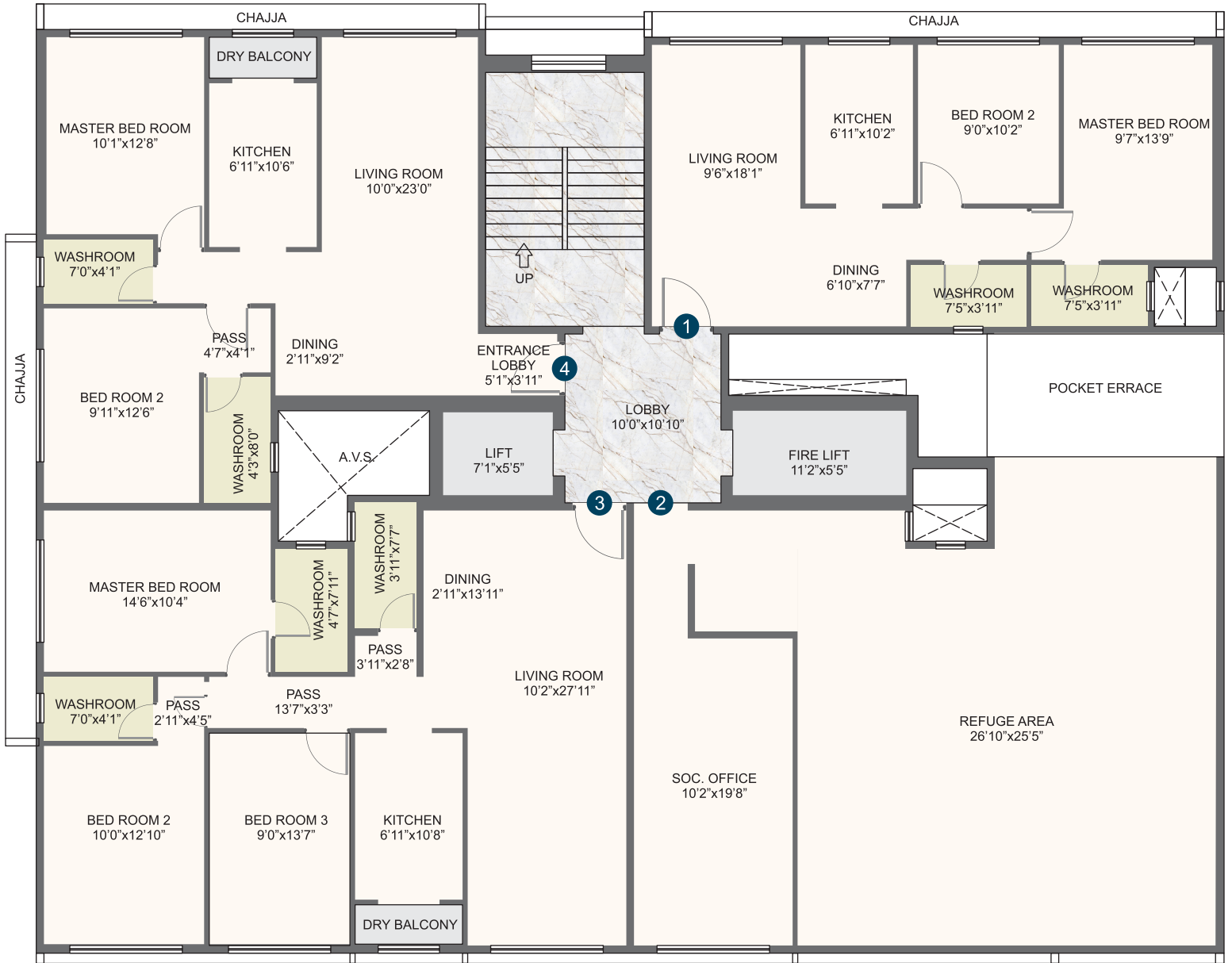
# FLOOR PLANS



7th, 9th to 14th, 16th FLOOR				
FLAT NO.	1	2	3	4
TYPE	2 BHK	3 BHK	3 BHK	2 BHK
RERA CA	633.46 SQ.FT.	1068.54 SQ.FT.	1026.24 SQ.FT.	758.65 SQ.FT.



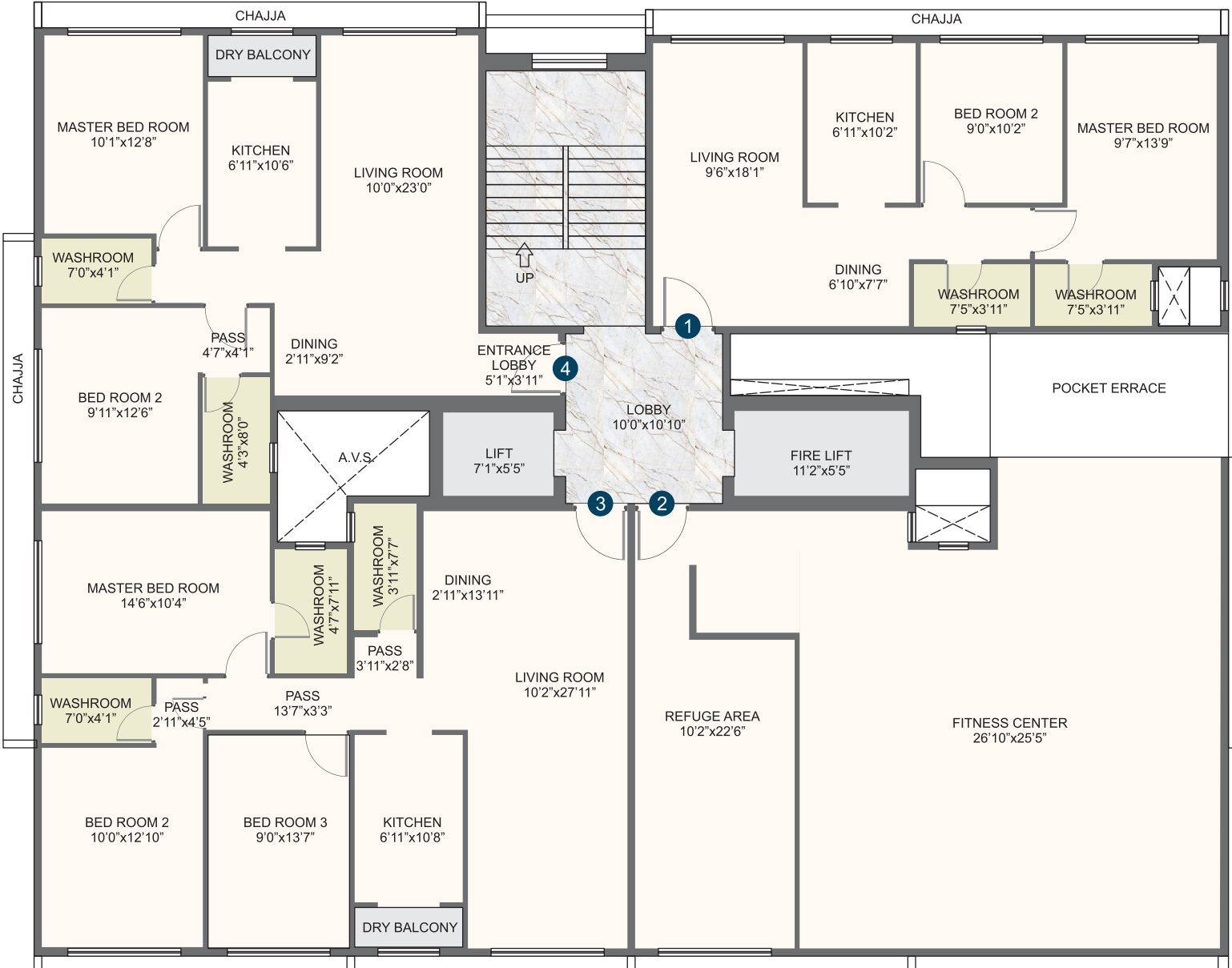
# FLOOR PLANS



8th FLOOR				
FLAT NO.	1	2	3	4
TYPE	2 BHK	REFUGE /	3 BHK	2 BHK
RERA CA	633.46 SQ.FT.	SOC. OFFICE	1026.24 SQ.FT.	758.65 SQ.FT.



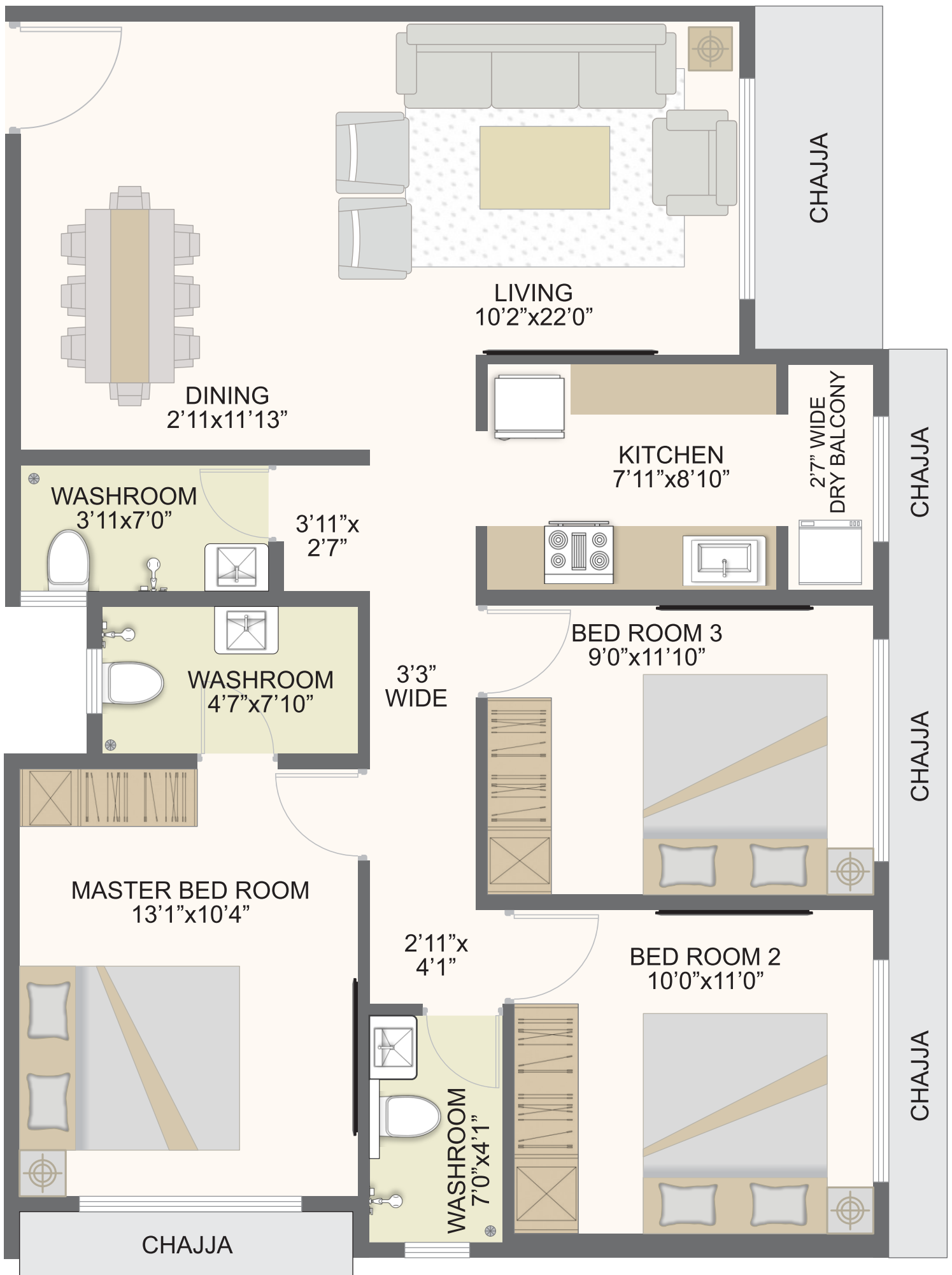
# FLOOR PLANS



15th FLOOR				
FLAT NO.	1	2	3	4
TYPE	2 BHK	REFUGE / FITN. CENT.	3 BHK	2 BHK
RERA CA	633.46 SQ.FT.		1026.24 SQ.FT.	758.65 SQ.FT.

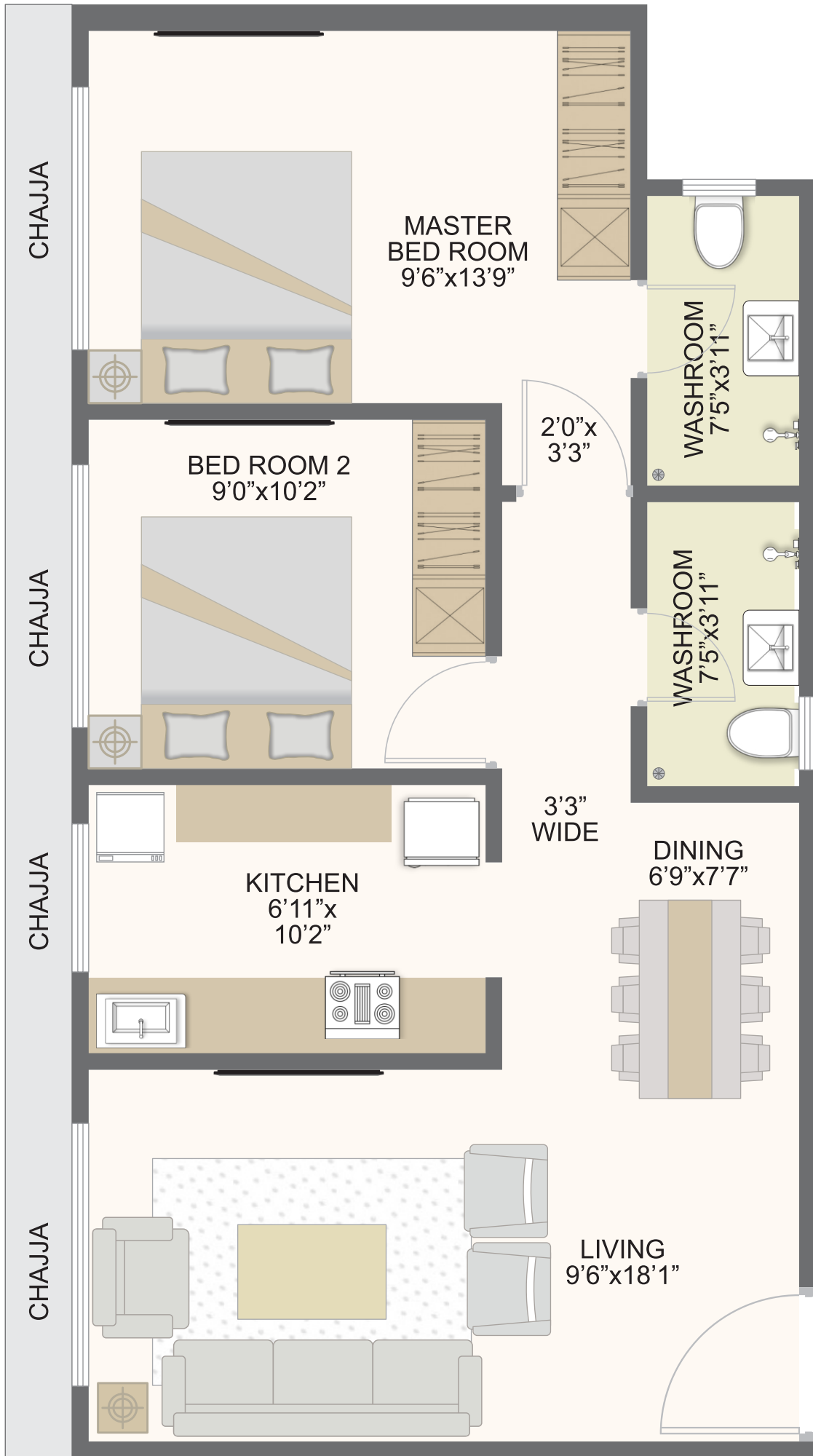


# WELL APPOINTED LAYOUTS



**3 BHK**  
**CARPET AREA**  
**1026 SQ.FT.**

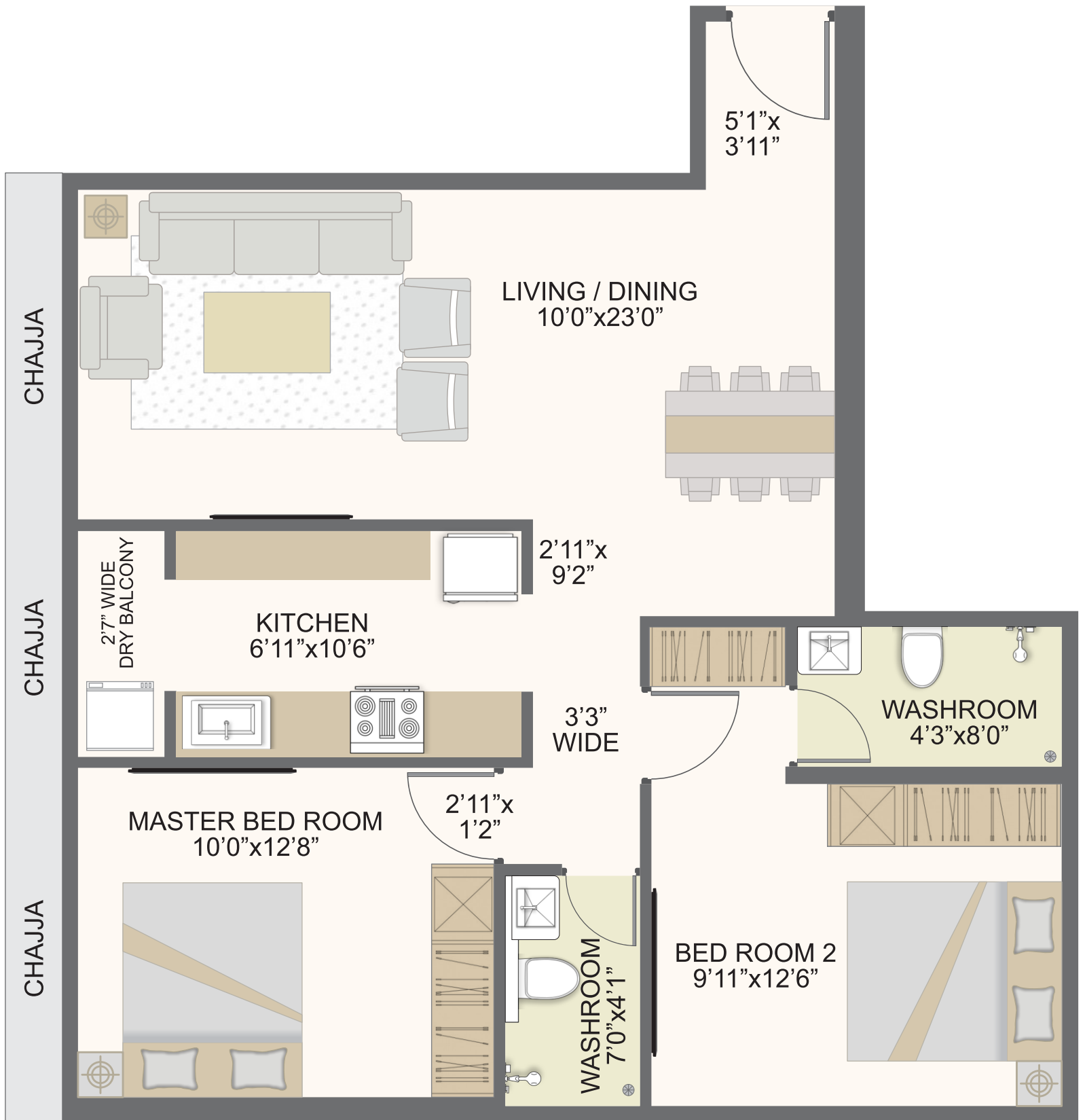




**2 BHK**  
**CARPET AREA**  
**633 SQ.FT.**







**2 BHK**  
**CARPET AREA**  
**758 SQ.FT.**



# AN UNMATCHED LOCATION

Rudra Paradise offers an unmatched location and round-a-clock connectivity via Western Express Highway, Railway Station, Airport and Santacruz Chembur Link Road.

All the modern hubs of entertainment, education, shopping and hospitality are at a very convenient distances from the project. Very renowned hospitals like Nanavati, Kokilaben and Lilavati are located at very short driving distances.

## An ideal address for your next home

- Walking distance from Santacruz Railway Station
- Utility stores, other shopping areas & markets in walking distances
- Located near reputed Schools & Colleges
- Leading hospitals & health care facilities at convenient distances
- Project located on the Western Express Highway
- Close proximity to the Mumbai Domestic & International Airport
- Reputed 5 Star Hotels located within the vicinity
- Surrounded by spiritual places of worship

## CONNECTIVITY

- Airport Terminal 1 : 8 Min
- Airport Terminal 2 : 12 Min
- BKC : 14 Min
- Santacruz Railway Stn : 2 Mins
- Western Exp Highway : 1 Min
- Vakola Bus Stop : 1 Min
- Vakola Police Stn : 2 Mins
- Roop Cinema Bus Stop : 1 Min

## HOSPITALS

- Surya Hospital : 9 Mins
- Shashtri Hospital : 4 Min
- V N Desai Hospital : 1 Min
- Benz Hospital : 6 Mins
- R K Hospital : 2 Mins
- Lalalajpatrai Medical Center : 4 Min

## SCHOOL / COLLEGES

- Podar International School : 8 Mins
- Lilavatibai Podar High School : 9 Mins
- Panbai International College : 3 Min
- Patuck Gala College : 3 Min
- Sheth Chimanlal Nathuram High Schl : 1 Min
- Little Angels English High School : 7 Mins
- Vakola Aram Society Public High Schl : 5 Min
- St Andrews School : 3 Min

## TEMPLES

- Ambe Mata Mandir : 2 Mins
- Hanuman Mandir : 5 Mins
- Shani Mandir : 7 Mins
- Ganesh Temple : 1 Min

## HOTELS

- Grand Hyatt : 5 Mins
- Galaxy Hotel : 2 Mins
- T24 Retro Hotel : 6 Mins
- Regency Hotel : 2 Mins
- Hotel Sahara Star : 7 Min
- Taj Santacruz : 9 Min

## FITNESS AND ENTERTAINMENT

- The Solitaire Fitness International : 1 Min
- Om Vika Yoga And Fitness Studio : 1 Min
- Ola Vakkola Banquet : 2 Mins
- Mumbai Cricket Club : 4 Mins
- Jio Mall : 15 Min



VILLE PARLE

Chhatrapati Shivaji Maharaj International Airport



T24 Retro Hotel

Surya Hospital

Panbai Intl College

Galaxy Hotel

Om Vikra Yoga & Fitness Studio

The Solitaire Fitness Intl

**RUDRA PARADISE**

Kanya Vidya Mandir College

Podar Intl. School

SANTACRUZ



Patuck Gala College

Lalajpatrai Medical Center

Vakola Police Stn

Ola Vakkola Banquet

LINKING ROAD

SWAMI VIVEKANANDA ROAD

Little Angels English High School

Benz Hospital

Sheth Chimanlal Nathuram High School

Roop.Cinema Bus Stop

Regency

NEHRU ROAD

Vakola Aram Society Public High School

Vakola Bus Stop

Mumbai Cricket Club

V N Desai Hospital

Vakola Police Stn.

Shani Mandir

Grand Hyatt

Ambe Mata Mandir

Hanuman Mandir

SANTACRUZ-CHEMBUR LINK ROAD

WESTERN EXPRESS HIGHWAY



KHAR ROAD

# OUR PRECIOUS LEGACY



Rudra Groups has delivered more than 4 million square feet of ready to move in projects in the city of Ahmedabad.

We were the first builders in Ahmedabad to bring Big Bazar & McDonald in Ahmedabad.

We have also built the first Audi Showroom in Ahmedabad.

Apple Cinema in Rudra Prism is one of the finest cinema halls in Ahmedabad which is highly preferred by the bollywood celebrities to promote their movies.

Super Plaza is a flourished commercial space in Vastrapur, equipped with spacious interiors and amenities such as sufficient parking spaces and advanced electronics systems.

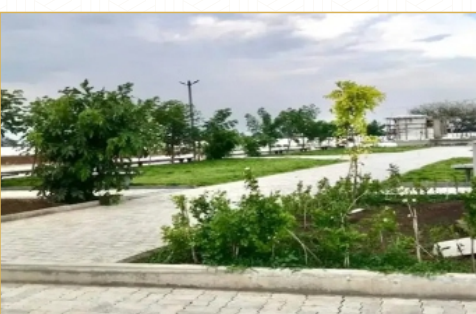
Rudra Green in Narol is a Residential landmark which is equipped with lush green gardens, round the clock water supply and exclusive zones for senior citizens and children.

Rudra Arcade is a place dedicated for corporate offices and shops. It is the most prominent project preferred by shop owners due to it's prime location.

Rudra Paradise is our first project in Ahmedabad and it is an Iconic Landmark of the city.

Rudra Paradise in Mumbai is our first project in the city which is already set out to be the tallest building in Santacruz east.

# THE PAST SUCCESS STORIES



# THE STRONG FOUNDATION



**LATE SHRI K.C. BAWA**  
FOUNDER

The founder and inspiration of Rudra Group and a true fighter who will always be there with us as a guiding star.



**BRIJESH GHOSWAMI**  
PRESIDENT

Mr. Ghoswami plays an integral role in all business ventures conducted by Rudra group of companies. He is the backbone of Rudra group. It is his support and motivation that helps Mr. Janak Barot take major business decisions. His main expertise is accounting for the entire group.



**JANAKBHAI BAROT**  
CHAIRMAN

Mr. Janak Barot started off his career in the field of real estate in the year 1994. In the beginning he dealt mostly with trading of land, with a dream and ambition of creating an empire for himself and his kids to carry forward his legacy. A very humble, down to earth and generous by nature, Mr. Barot sets up a benchmark for his future generations being from a humble family background he had to struggle his way up in this competitive business of real estate.

# THE GROWTH PROPELLORS



**MR. RUDRA BAROT**  
CEO

Mr. Rudra Barot has pursued Architecture from a reputed university in Ahmedabad. After completing his studies, Mr. Rudra took keen interest in business and was always passionate about creating landmarks in real estate business.

Mr. Rudra Barot moved to Mumbai in the year 2018 and is a rising star in the enterprising world of real estate business. He is one of the key reasons why Rudra Group is growing each and every day as a brand in luxury markets of real estate in Mumbai.

**TANYA GOEL BAROT**  
COO



Ms. Tanya Barot is a young business women belonging to a strong business background family who had at first started her own designer diamond jewellery line. She has been in business at an early age of 17. She has won the young entrepreneur award in the year 2011, business women of the year award in the year 2012 and also won the award for the best advertising campaign in the year 2013.

She has completed her MBA in Marketing and Accounts post graduate diploma from London. Ms. Tanya is currently perusing a PhD from St. Xavier's university. She got inspired by her husband Mr. Rudra Barot to join the family business of real estate development so that they can work together and make Rudra Group the brand of the future in the Indian real estate industry.

Project by:



Since : 1995

RERA Reg. No.: P51800008159

[www.rudrabuilders.com](http://www.rudrabuilders.com) [admin@rudrabuilders.com](mailto:admin@rudrabuilders.com)

+91 98777 37776

**SALES ADDRESS:**

8/63, Anand Nagar Sahyog Chs., Near Paras Path Lab, Service Road, Santacruz (E). Mumbai, Maharashtra 400055.

**SITE ADDRESS:**

Guru Narayan Rd, Madhuvan Society, Sen Nagar, Santacruz (E), Mumbai, Maharashtra-400055.

**Marketing Inputs by:**



**R.D.BROTHERS**  
PROPERTIES

RERA Reg. No.: P51800025192

[www.rdbrothers.com](http://www.rdbrothers.com) [info@rdbrothers.com](mailto:info@rdbrothers.com)

**STRUCTURAL ENGINEER:**

UNISTEPS CONSULTING  
Row House #4  
Dheeraj Savera  
Opp. Siddharth Nagar  
Borivali (E)  
Mumbai-400066.

**LIAISONING ARCHITECT:**

SHILP ASSOCIATES  
3rd Floor, E Square  
Subhash Rd  
Vishnu Prasad Society  
Vile Parle (E)  
Vile Parle  
Mumbai-400057.

**ADVOCATE:**

PURAV DAMANIA

B/4/2, Bansi Ratna, Mahersh Nagar, S V Road, Goregaon (West), Mumbai - 400062.